

ATTENTION!

For legal and safety purposes, please refrain from calling your office, customer support line, or safety personnel while driving.

HOW TO INSTALL

Step 1: Make sure your vehicle engine is turned off. If the engine is on, please turn it off and turn the key to the "Off" position before connecting ELD.

Step 2: Locate the diagnostic part inside your vehicle's cabin. The diagnostic part is typically located in one of the following places:

- Under the left side of the dashboard;
- Under the steering wheel;
- Near the driver's seat;
- Under the driver's seat.

Step 3: Connect the ELD plug to the diagnostic part of the vehicle. Unscrew the lock surface until it locks. Make sure the ELD is connected

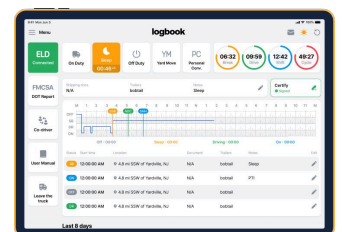
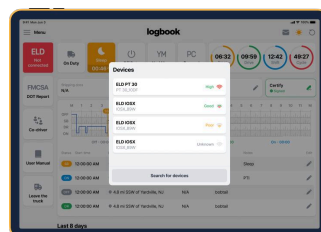
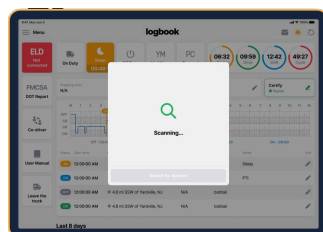
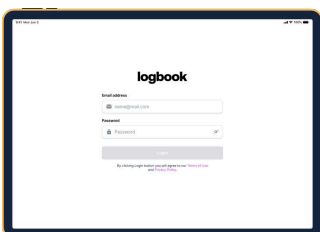
Step 4: Once plugged in, the device will start syncing with the engine control module [ECM] and TT ELD application on the tablet.

Step 5: Then get the tablet provided by fleet manager and turn it on. Tablet should automatically start application.



APPLICATION GUIDE

1. Log in to application using your Username and Password. If you do not have TT ELD account, please contact your fleet manager.
2. Your tablet with TT ELD application will automatically scan for ELD
3. You should choose ELD
4. If the ELD is connected to the vehicle, you can see green icon on the top left corner of the dashboard.



For any question, please send an email to info@tteld.com

FMCSA required: keep this card in your vehicle at all times